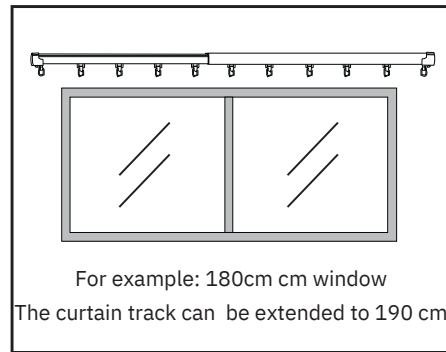
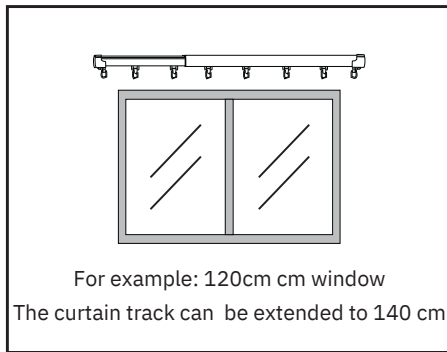
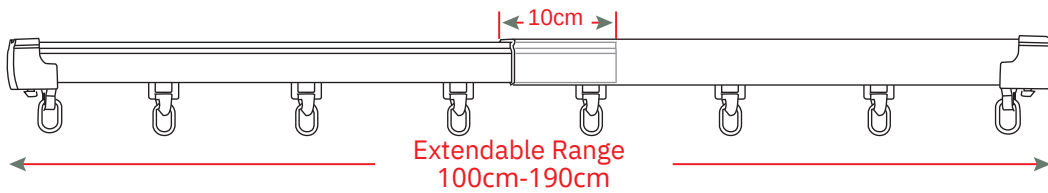


01

The Superglide Track can be freely extended with in the range of 100 cm - 190 cm. If the width of the window is less than 190 cm you require one track. If your measurement is between 190cm - 370cm you will need x2 tracks. You can add multiple tracks together. Note: When the track is extended to its max, the overlap between the inner tube and the outer tube should not be less than 10cm.

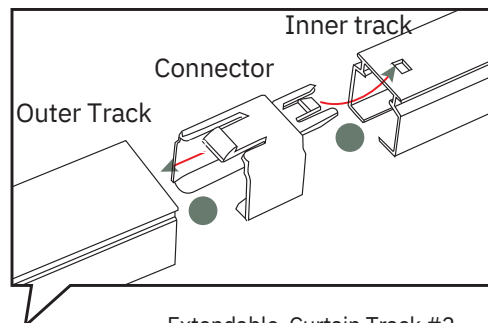


02

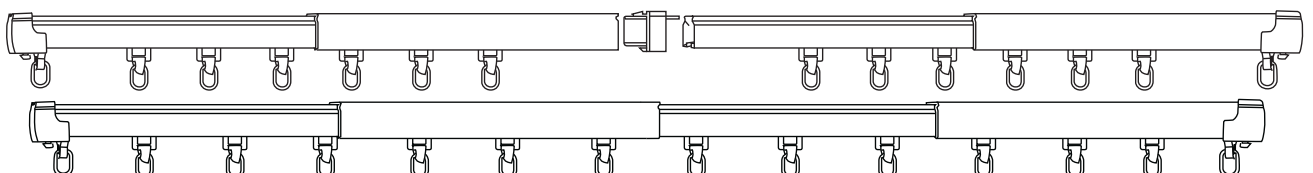
For windows greater than 190 cm, you can easily join two sets together with the joiner included in the set. You can effectively join as many tracks together to accommodate the widest of spaces. Use this chart for the number of tracks you need to purchase to cover your desired width:

Length range	Number of sets	Notes
100-190cm	1 set	The outer track of one superglide set can be connected to the inner track section of the next superglide set. A large endcap from one track and a small end cap from the second set will need to be removed using a screw driver. The plastic connector provided is clipped into the inner track and the inner track is then inserted inside the outer track. The overlap must be no less than 10cm
≤ 370cm	2 sets	
≤ 550cm	3 sets	
≤ 730cm	4 sets	

(Extendable Curtain Track #1)

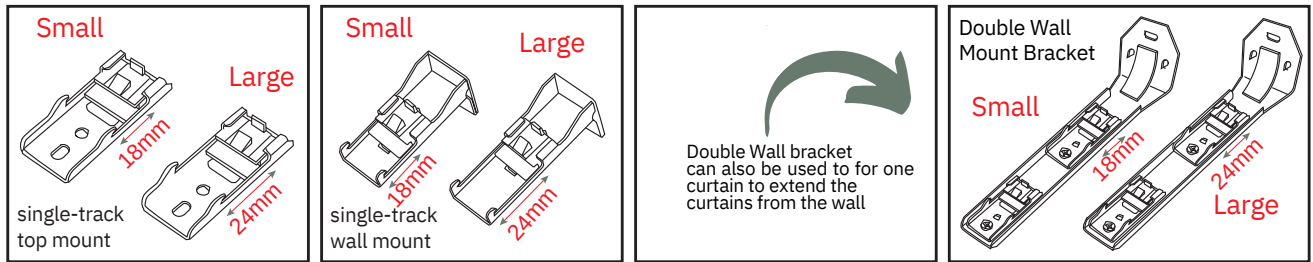


Extendable Curtain Track #2



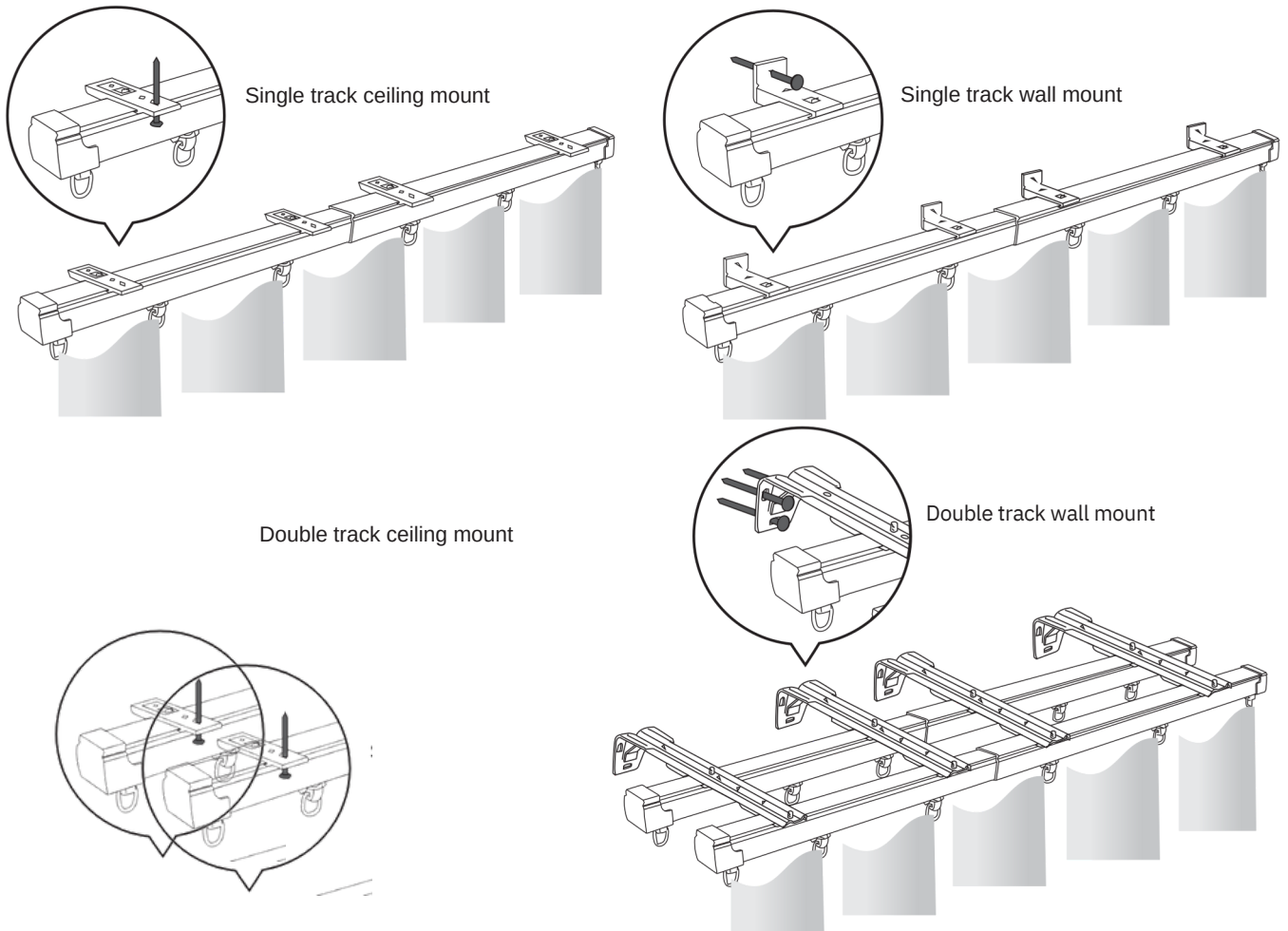
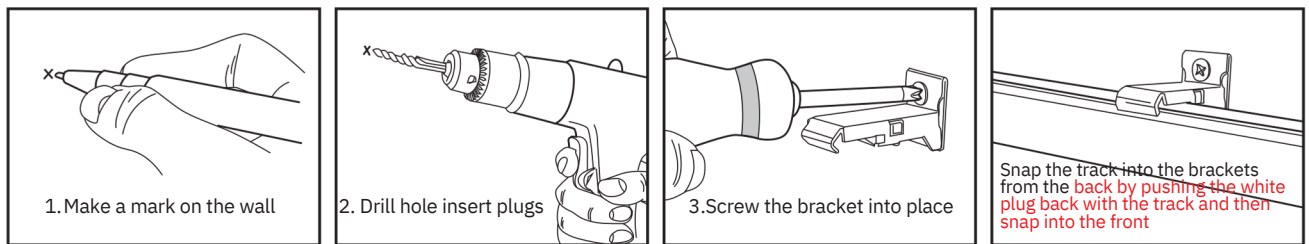
03

There are 3 bracket options: Single track Wall Mount, Single track Ceiling Mount and Double track Ceiling Mount.
 (If you chose to have a Double track from the ceiling, just use 2 Supergilde Tracks parallel to each other)
 The standard Superglide set comes with 4 Ceiling Mount Brackets (2 large and 2 small) as well as 4 Wall Mount Brackets (2 large and 2 small).
 The two large brackets fit onto the outer track and the two smaller brackets fit onto the inner track.
 (You can purchase the Double Wall mount Brackets separately if you require them - they also come as 2 larger and 2 smaller brackets) Before installing and screwing the brackets into the wall/ceiling, make sure the larger brackets correlate with the outer track and the smaller brackets correlate with the inner track.



04

Once the total track length and bracket positions have been determined, mark and drill your holes, insert the plastic plugs and screw brackets into wall/ceiling with suitable screws. Finally, clip in the track. (This method is the same for Wall Mount, Ceiling Mount and Double Wall Mount Brackets.)



WHAT IS IN THE BOX

- 1 X SUPERGLIDE TRACK EXTENDABLE SET 100CM TO 190CM
- 2 X SMALL WALL BRACKETS (for the inner track end)
- 2 X LARGE WALL BRACKETS (for the inner track end)
- 2 X SMALL CEILING BRACKETS (for the inner track end)
- 2 X LARGE CEILING BRACKETS (for the inner track end)
- 20 X SPARE ROLLER GLIDERS
- 1 X CONNECTOR FOR CONNECTING TWO SETS
- 8 X SCREWS
- 8 WALL PLUGS

The method above is for easy installation of light curtains into plaster walls. We recommend you visit your hardware store for advice on the most suitable fixings for your situation. The track can be easily attached to ceiling or wall but we do recommend you use the correct fixing method for material/substance your wall is made from.